

WELCOME

I-55 Reconstruction Design Study & Environmental Assessment



**Advisory Group Meeting
Tuesday, April 10, 2012**

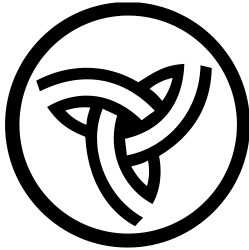
RECONSTRUCTION

DESIGN STUDY & ENVIRONMENTAL ASSESSMENT

SPRINGFIELD • SANGAMON COUNTY



WELCOME



Illinois Department of Transportation

The Illinois Department of Transportation (IDOT), the agency in charge of state-maintained public roadways, is conducting the I-55 Study with the assistance of a consultant team, led by Hanson Professional Services Inc.

RECONSTRUCTION

DESIGN STUDY & ENVIRONMENTAL ASSESSMENT

SPRINGFIELD • SANGAMON COUNTY



INTRODUCTIONS

- IDOT
- Hanson Professional Services Inc.
- Vector Communications
- Advisory Group



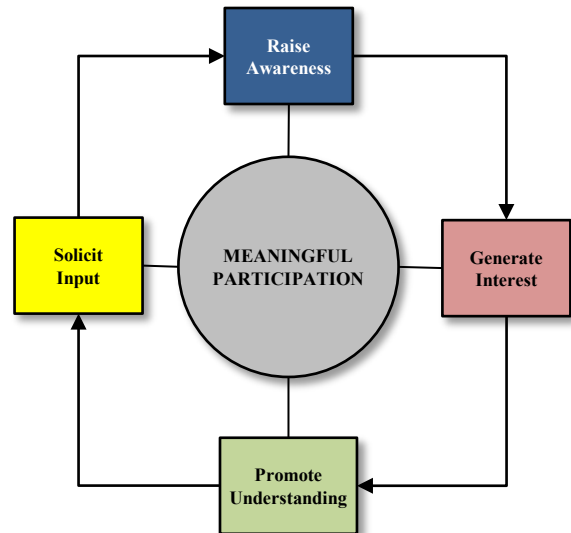
GOALS & OBJECTIVES

Public Involvement Goal:

- Obtain community's meaningful participation in I-55 study through various involvement tactics

Objectives:

- **Raise Awareness:**
 - Provide clear, accurate and easily attainable information on study
- **Generate Interest:**
 - Address community's needs, interests and values
- **Promote Understanding:**
 - Help community understand study's possible impacts
- **Solicit Input:**
 - Seek community's feedback on study findings



INVOLVEMENT ACTIVITIES

Join Advisory
Committee

Visit Study Website
www.i55springfield.com

**Attend Public
Information
Meetings**

Follow Local Media
Coverage

- Give Your Input:
- Email:
contact@i55springfield.com
 - Call: (217) 782-4760

RECONSTRUCTION

DESIGN STUDY & ENVIRONMENTAL ASSESSMENT

SPRINGFIELD • SANGAMON COUNTY



RULES OF ENGAGEMENT

- **Ground Rules**

- Arrive prepared
- Respect differences
- Avoid side talk
- Put phones on silent
- Share speaking time
- Strive for consensus
- Ask questions
- Voice concerns at meetings



STUDY PURPOSE

The I-55 Study is examining ways to improve the interstate around Springfield from south of the Sixth Street interchange to north of the Sherman interchange. Its purpose is to:

1. Relieve traffic congestion; and
2. Increase public safety for area residents and the traveling public.



RECONSTRUCTION

DESIGN STUDY & ENVIRONMENTAL ASSESSMENT

SPRINGFIELD • SANGAMON COUNTY

PURPOSE & ROLE OF ADVISORY GROUP

- Critical component of the public participation program
- Obtain community input
- Identify and address local concerns
- Help build public interest and involvement in the decision-making process

MEETING OBJECTIVES

- Acquaint Advisory Group with I-55 Study
- Provide community input on Study
- Identify local interests and concerns
- Help build public awareness of and involvement in Study



RECONSTRUCTION

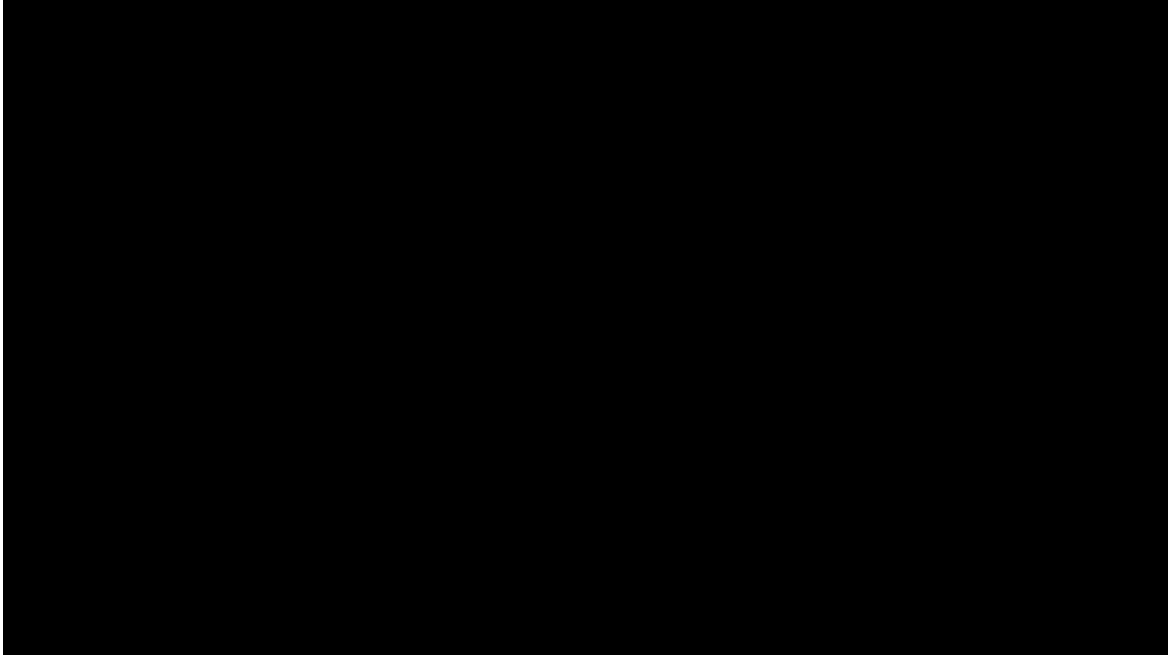
DESIGN STUDY & ENVIRONMENTAL ASSESSMENT

SPRINGFIELD • SANGAMON COUNTY

PROJECT VIDEO

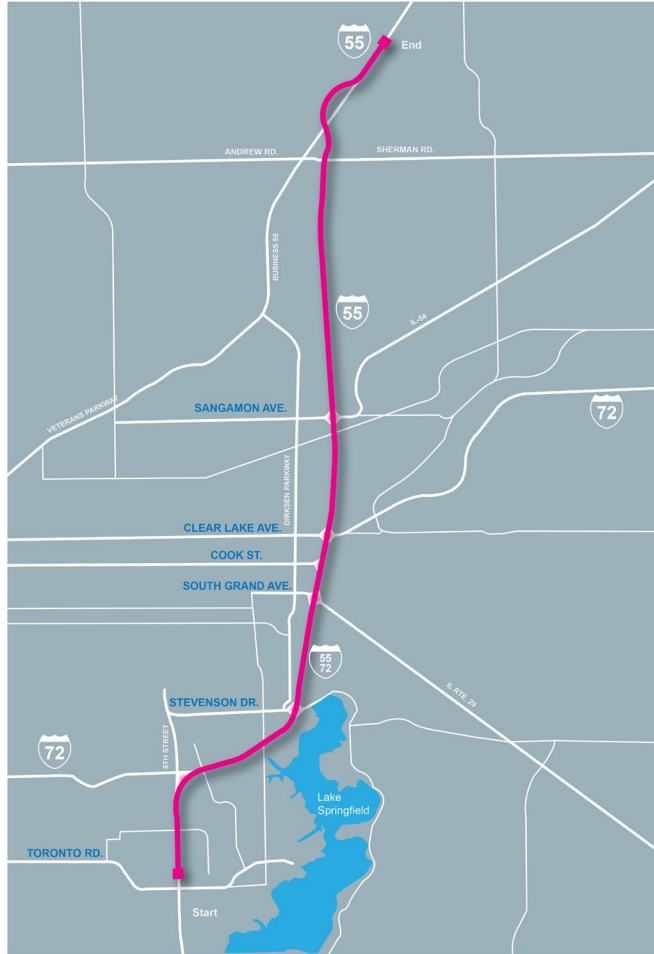


RECONSTRUCTION
DESIGN STUDY & ENVIRONMENTAL ASSESSMENT
SPRINGFIELD • SANGAMON COUNTY



STUDY CORRIDOR

RECONSTRUCTION
DESIGN STUDY & ENVIRONMENTAL ASSESSMENT
SPRINGFIELD • SANGAMON COUNTY



STUDY COMPONENTS

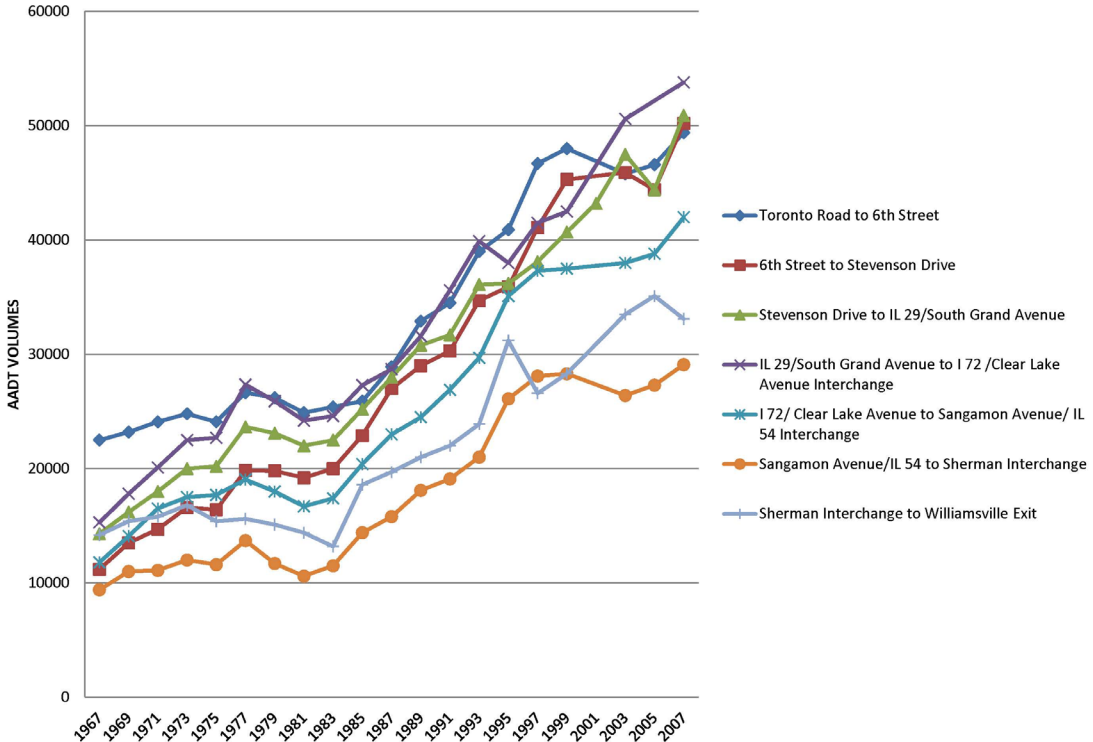
- Alternatives analysis
- Additional lanes
- Interchange types
- Traffic capacity
- Safety
- Structures
- Drainage
- Environmental impacts
- Documentation & approval

TRAFFIC STUDIES

RECONSTRUCTION
 DESIGN STUDY & ENVIRONMENTAL ASSESSMENT
 SPRINGFIELD • SANGAMON COUNTY

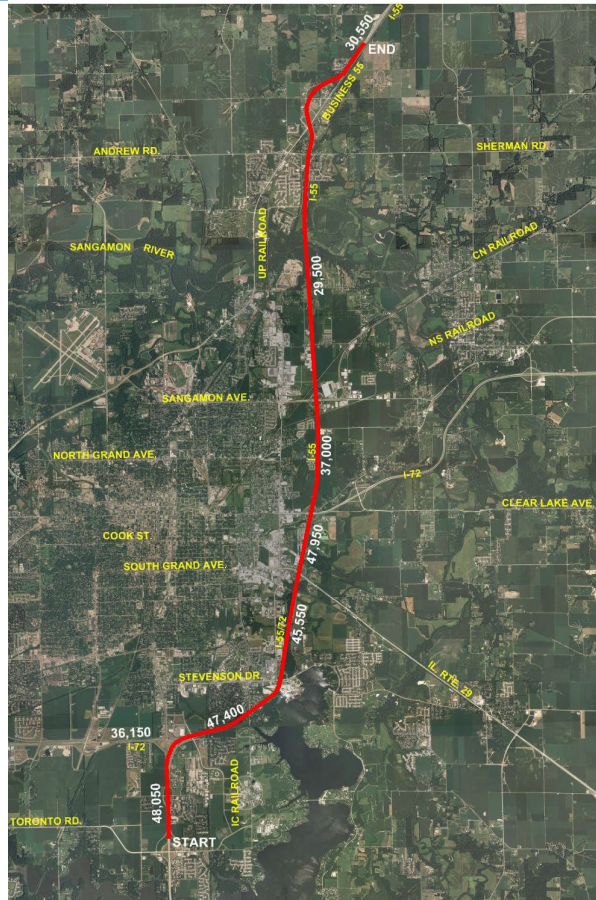


Springfield I-55 Corridor Historical Traffic



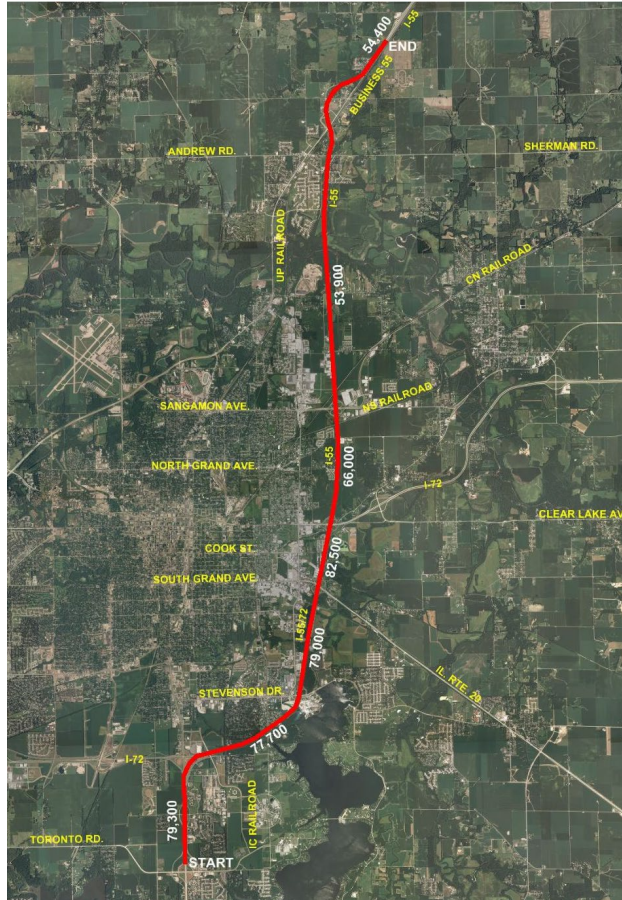
YEAR 2008 OR 2010 DESIGN TRAFFIC (EXISTING)

RECONSTRUCTION
DESIGN STUDY & ENVIRONMENTAL ASSESSMENT
SPRINGFIELD • SANGAMON COUNTY



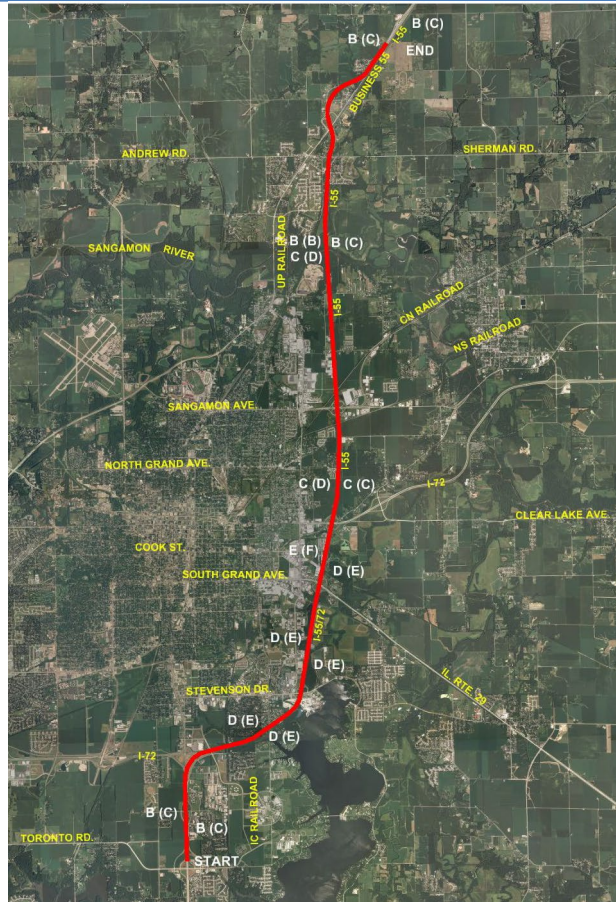
YEAR 2040 AVERAGE DAILY TRAFFIC

RECONSTRUCTION
DESIGN STUDY & ENVIRONMENTAL ASSESSMENT
SPRINGFIELD • SANGAMON COUNTY



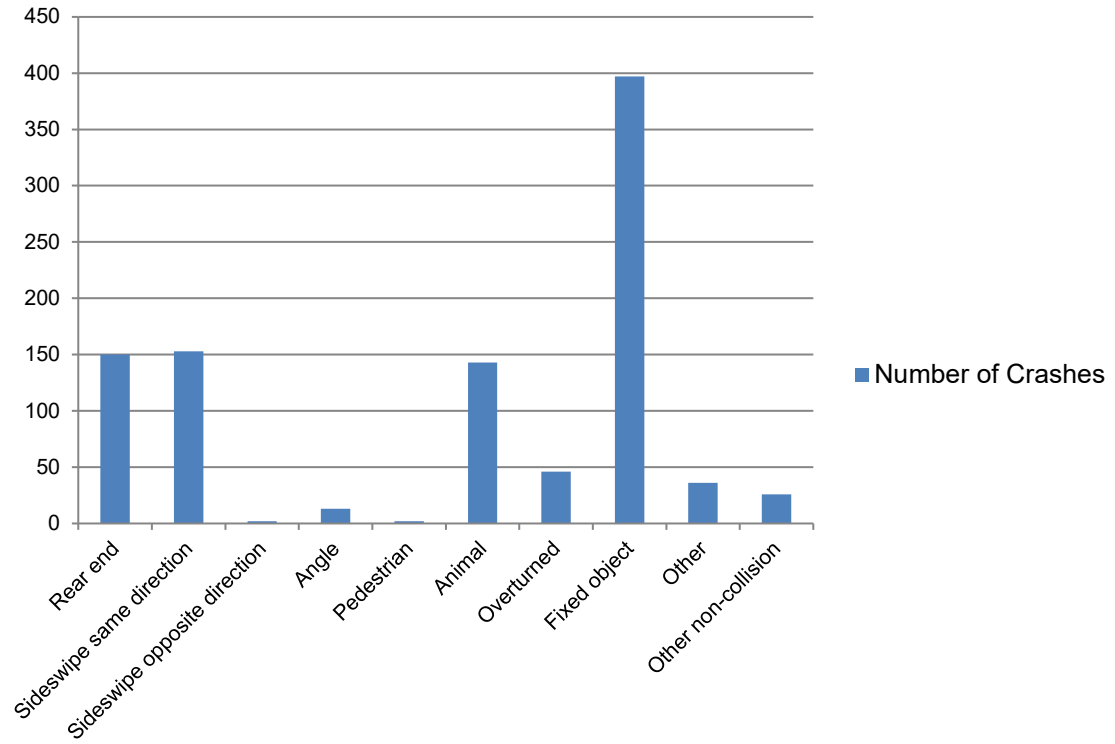
2040 NO BUILD LEVEL OF SERVICE

RECONSTRUCTION
DESIGN STUDY & ENVIRONMENTAL ASSESSMENT
SPRINGFIELD • SANGAMON COUNTY



CRASH TYPES (2006-2010)

RECONSTRUCTION
DESIGN STUDY & ENVIRONMENTAL ASSESSMENT
SPRINGFIELD • SANGAMON COUNTY



PURPOSE & NEED

- Improve safety
 - Eliminate weaving
- Increase capacity
 - Add lanes
- Meet current design standards
 - Eliminate tight radius ramps
 - Provide a minimum of two lanes for I-72

RECONSTRUCTION

DESIGN STUDY & ENVIRONMENTAL ASSESSMENT

SPRINGFIELD • SANGAMON COUNTY



RESTRICTIONS

- Interchange spacing
- Existing development
- CWLP facilities
- Environmental resources
- SMSD Sugar Creek Plant

RECONSTRUCTION

DESIGN STUDY & ENVIRONMENTAL ASSESSMENT

SPRINGFIELD • SANGAMON COUNTY



ADDITIONAL LANES

- Three lanes each direction
 - Median barrier
 - Wide shoulders
- Collector – distributor roads
 - Used by entering and exiting traffic
 - Lower operating speed

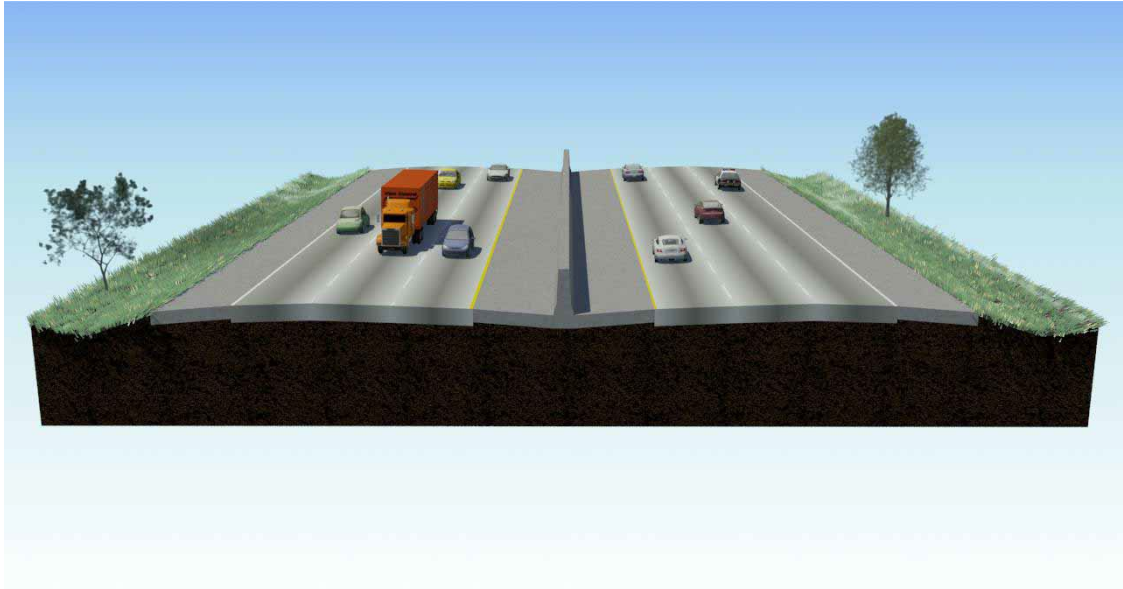


TYPICAL SECTION – 3 LANES

RECONSTRUCTION

DESIGN STUDY & ENVIRONMENTAL ASSESSMENT

SPRINGFIELD • SANGAMON COUNTY

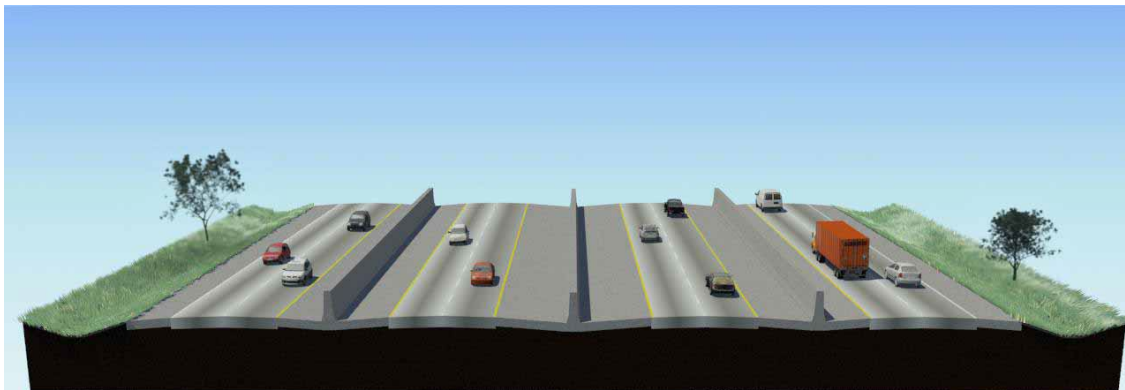


COLLECTOR-DISTRIBUTOR ROADS

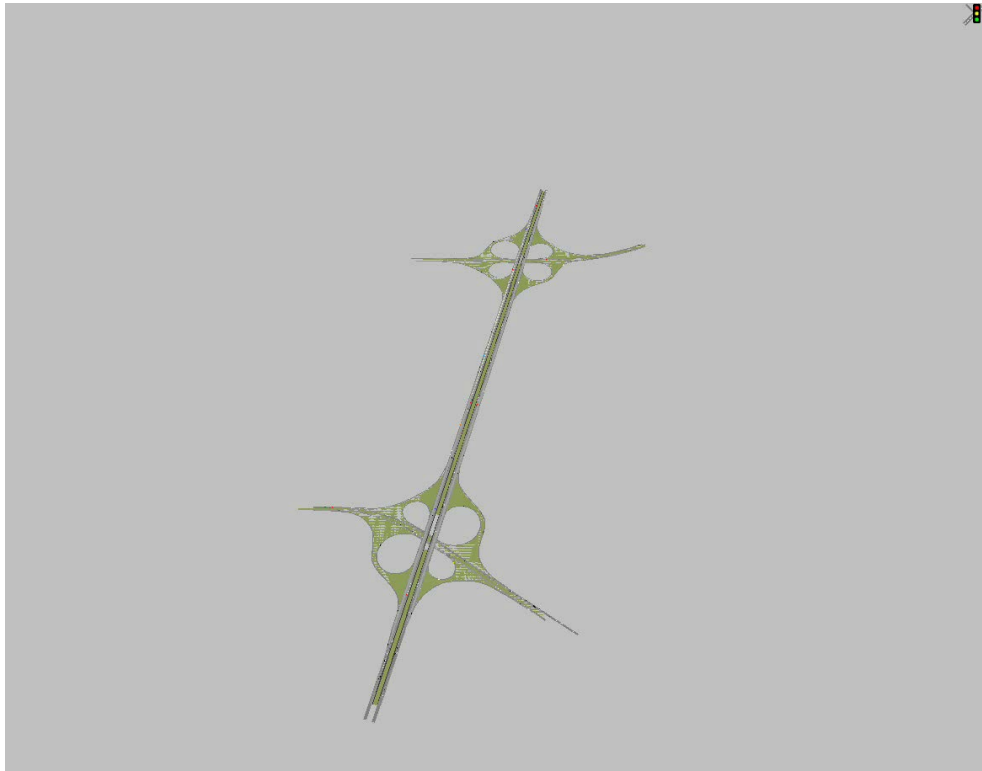
RECONSTRUCTION

DESIGN STUDY & ENVIRONMENTAL ASSESSMENT

SPRINGFIELD • SANGAMON COUNTY



COLLECTOR-DISTRIBUTOR ROADS VIDEO



RECONSTRUCTION

DESIGN STUDY & ENVIRONMENTAL ASSESSMENT

SPRINGFIELD • SANGAMON COUNTY



INTERCHANGE TYPES

- Interchange with crossroads
 - Cloverleaf
 - Diamond
 - Parclo
 - Single Point Diamond
- Interchanges at I-55 with I-72
 - Cloverleaf
 - Directional



PARCLO



*I-55 / US 150
Bloomington, Illinois*



RECONSTRUCTION

DESIGN STUDY & ENVIRONMENTAL ASSESSMENT

SPRINGFIELD • SANGAMON COUNTY

SINGLE POINT DIAMOND

RECONSTRUCTION

DESIGN STUDY & ENVIRONMENTAL ASSESSMENT

SPRINGFIELD • SANGAMON COUNTY



*I-55 / Pulaski Rd.
Chicago, Illinois*

SINGLE POINT DIAMOND VIDEO



RECONSTRUCTION

DESIGN STUDY & ENVIRONMENTAL ASSESSMENT

SPRINGFIELD • SANGAMON COUNTY



DIRECTIONAL

RECONSTRUCTION

DESIGN STUDY & ENVIRONMENTAL ASSESSMENT

SPRINGFIELD • SANGAMON COUNTY



*I-255 / I-270
Mehlville, Missouri*

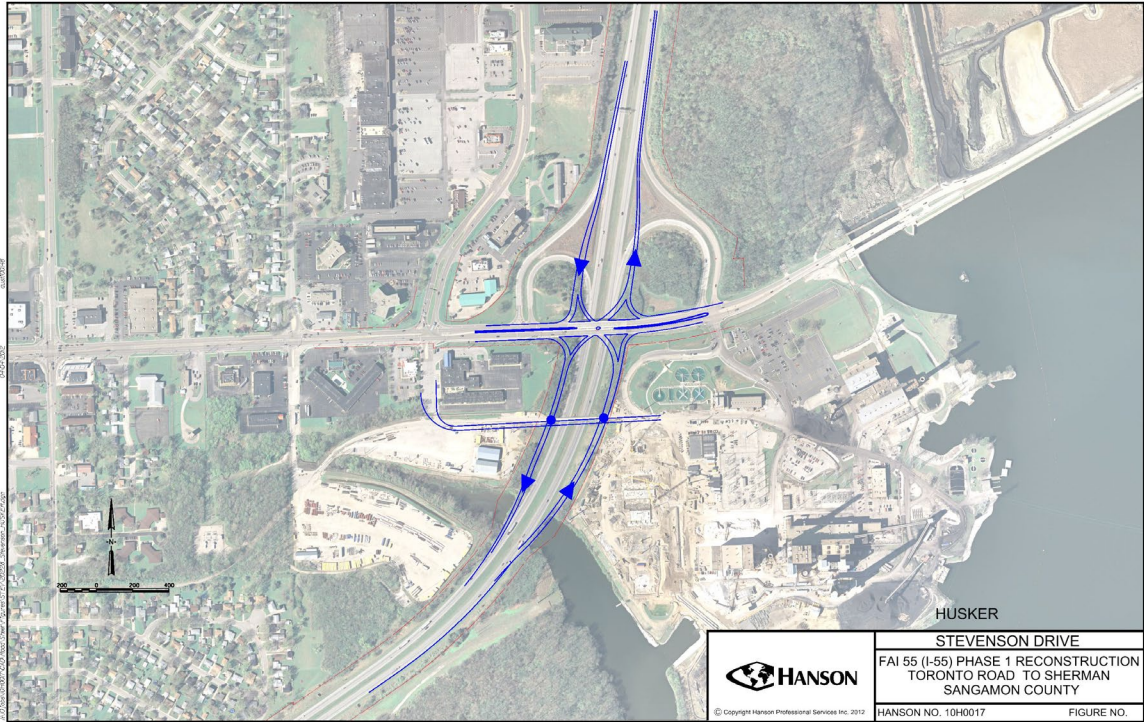
PROPOSED INTERCHANGES

- A. Stevenson Drive
- B. South Grand Avenue
- C. Sangamon Avenue
- D. Sixth Street / I-72
- E. Clear Lake Avenue / I-72



STEVENSON DRIVE

RECONSTRUCTION
DESIGN STUDY & ENVIRONMENTAL ASSESSMENT
SPRINGFIELD • SANGAMON COUNTY

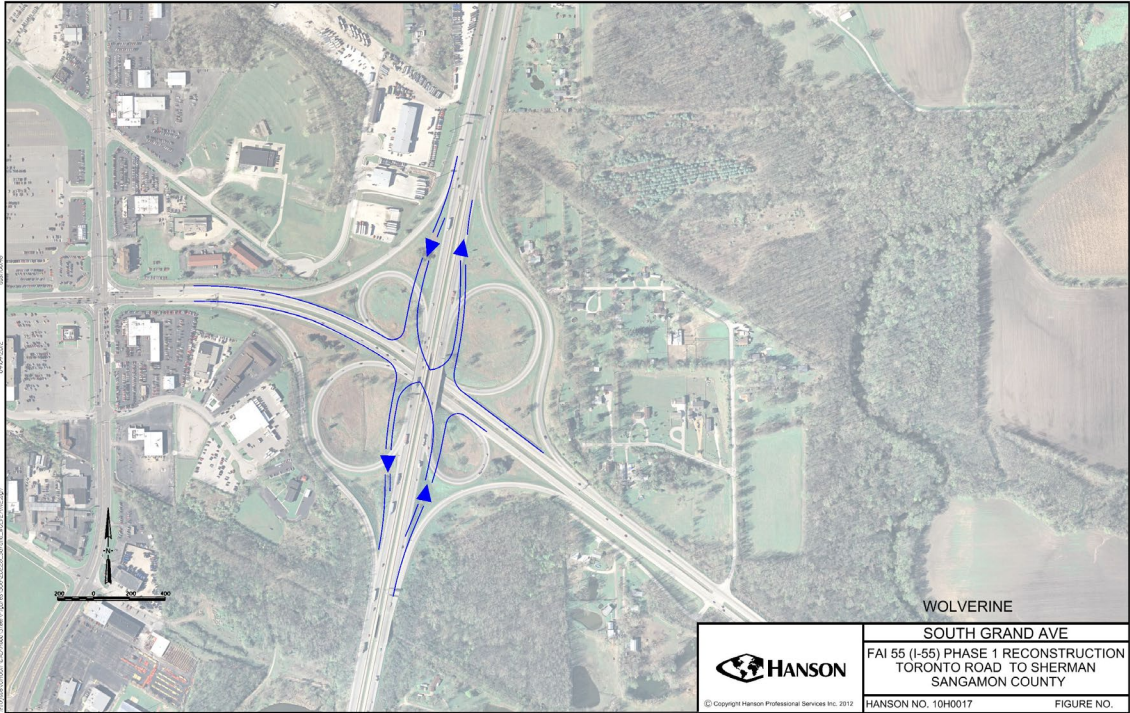


SOUTH GRAND AVENUE

RECONSTRUCTION

DESIGN STUDY & ENVIRONMENTAL ASSESSMENT

SPRINGFIELD • SANGAMON COUNTY

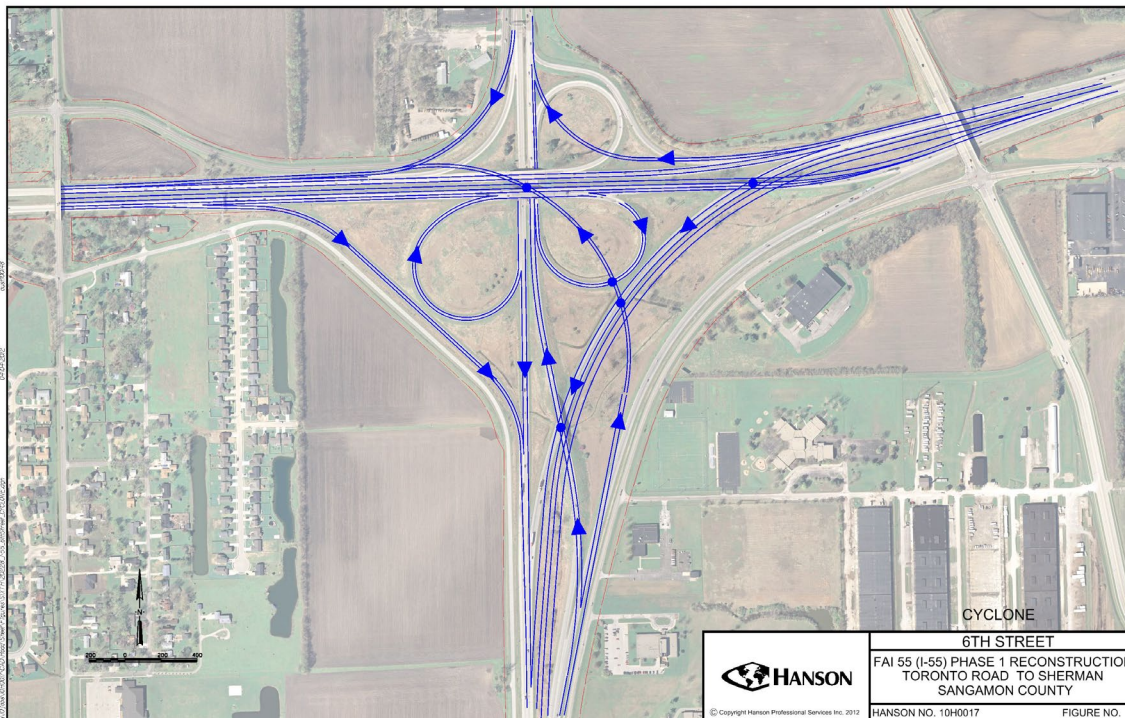


SIXTH STREET / I-72

RECONSTRUCTION

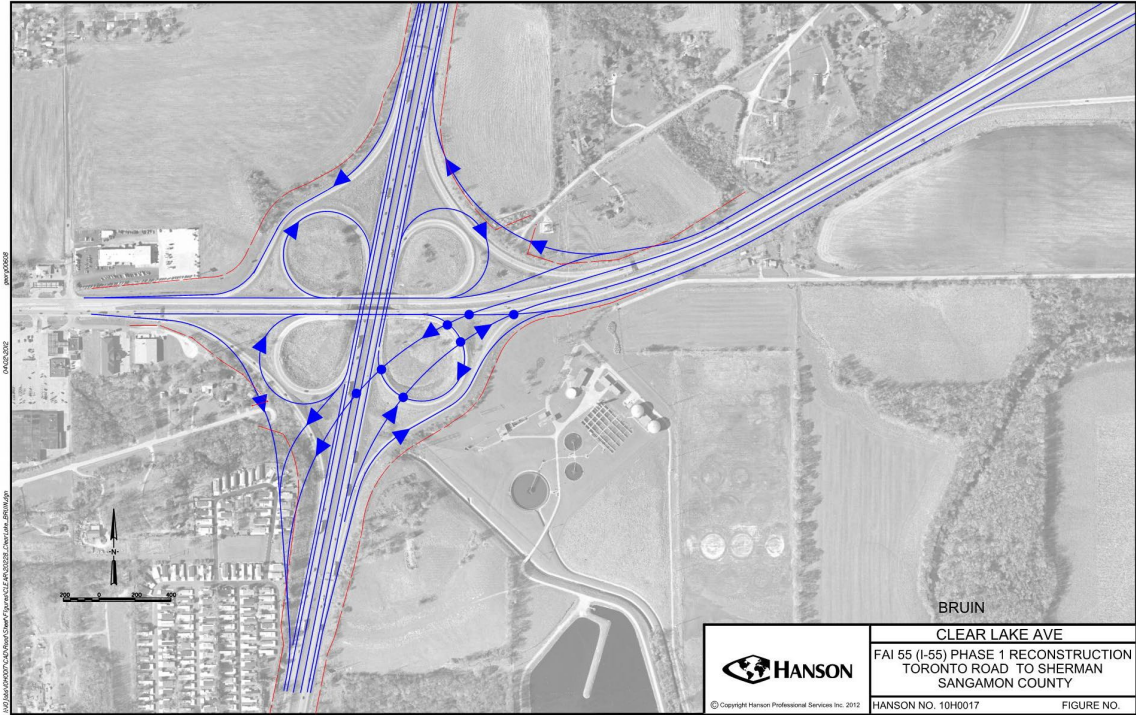
DESIGN STUDY & ENVIRONMENTAL ASSESSMENT

SPRINGFIELD • SANGAMON COUNTY



CLEAR LAKE AVENUE / I-72

RECONSTRUCTION
DESIGN STUDY & ENVIRONMENTAL ASSESSMENT
SPRINGFIELD • SANGAMON COUNTY



DISCUSSION



RECONSTRUCTION
DESIGN STUDY & ENVIRONMENTAL ASSESSMENT
SPRINGFIELD • SANGAMON COUNTY



NEXT STEPS

- Complete interchange type studies
- IDOT review of type studies
- Next SAG meeting summer 2012
 - Environmental update



RECONSTRUCTION

DESIGN STUDY & ENVIRONMENTAL ASSESSMENT

SPRINGFIELD • SANGAMON COUNTY